



101 Wolsey Road

, Sunbury-On-Thames, TW16 7TX

Asking price £499,950



This semi-detached home is presented in excellent order throughout, offering versatile accommodation.

The ground floor consists of a bedroom 4/study, guest cloakroom, modern fitted kitchen and an L-shape reception room to the rear, with ample space to accommodate living and dining areas. This room has French doors opening onto the South facing garden.

The first floor has a spacious four-piece bathroom suite and three double bedrooms, two of which have fitted wardrobes.

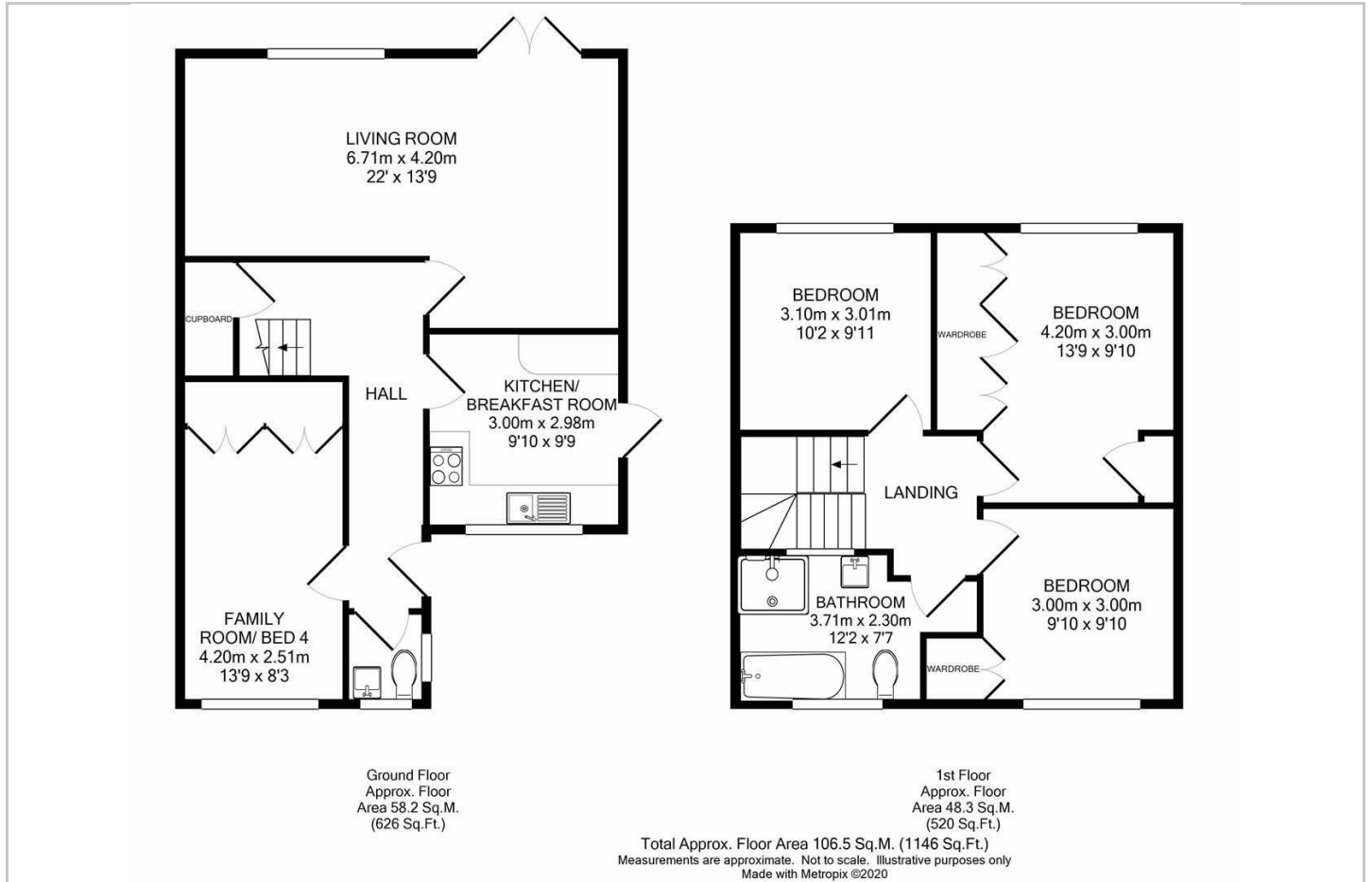
The front and rear gardens are very well presented and low maintenance.

Located on a popular residential road approx. half a mile from Sunbury train station.





Floor Plan



Area Map



Viewing

Please contact our Shepperton - Sales Office on 01932232927 if you wish to arrange a viewing appointment for this property or require further information.

These particulars, whilst believed to be accurate are set out as a general outline only for guidance and do not constitute any part of an offer or contract. Intending purchasers should not rely on them as statements of representation of fact, but must satisfy themselves by inspection or otherwise as to their accuracy. No person in this firm's employment has the authority to make or give any representation or warranty in respect of the property.

Energy Efficiency Graph

